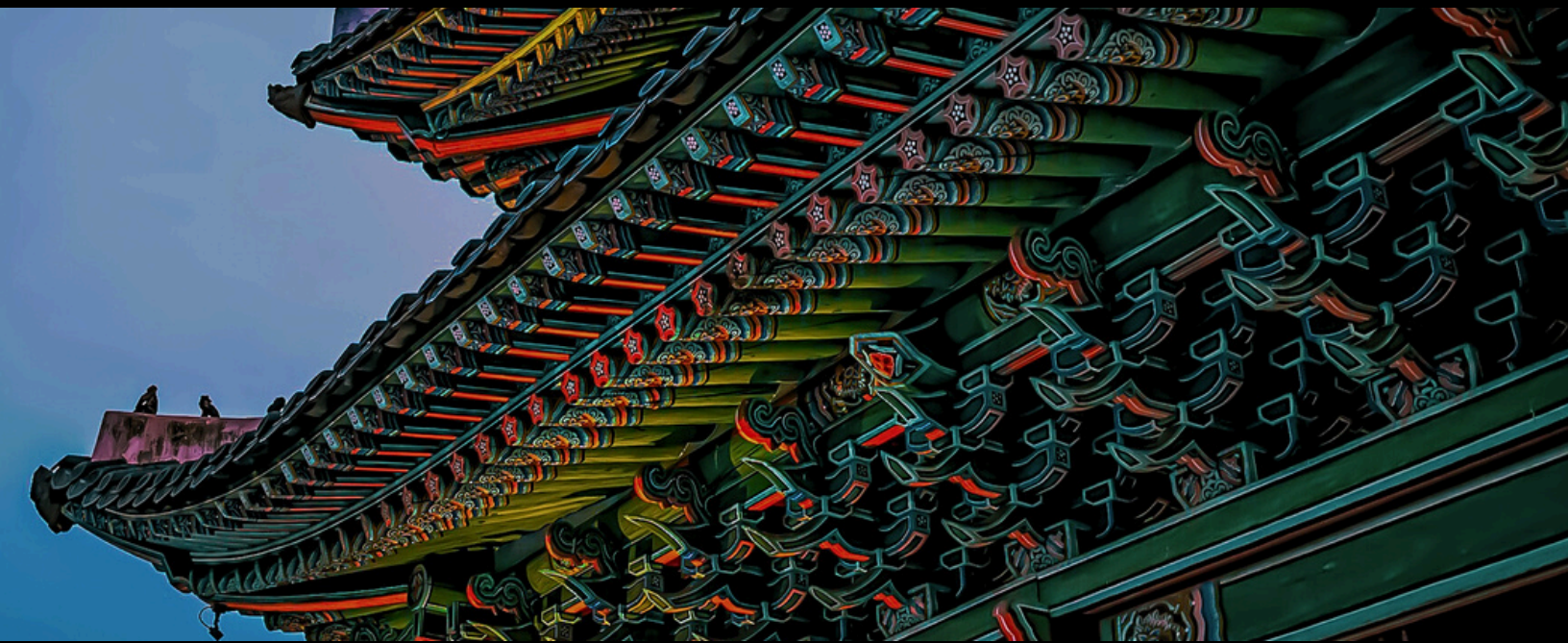


AKSA 10-YEAR ANNIVERSARY CONFERENCE



REGISTER HERE

THE SOCIOLOGY OF KOREA:
PAST, PRESENT, AND FUTURE



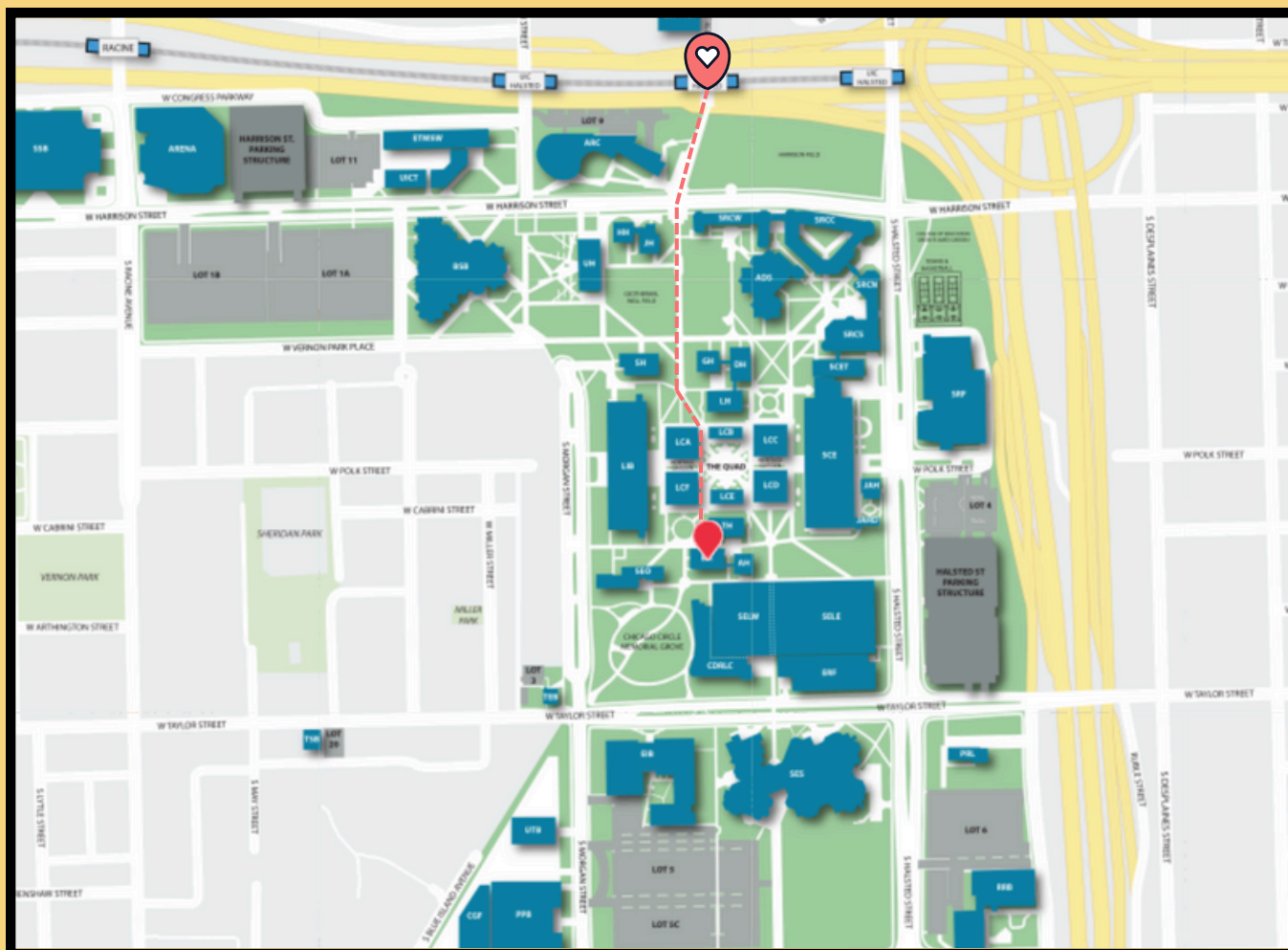
UNIVERSITY OF ILLINOIS CHICAGO
BURNHAM HALL, ROOM 208
828 SOUTH HALSTED STREET

08.08.25
10:00 A.M.

CONFERENCE SITE

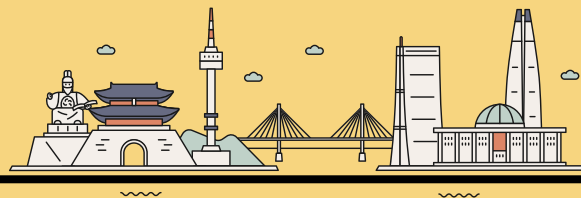
University of Illinois Chicago
Burnham Hall, Building 617, Room 208
828 South Halsted Street

(access through Chicago L **Blue** Line)



<https://maps.uic.edu/Maps>

AKSA is grateful to the **Korean Sociological Association** and the **Korea Foundation** for generously supporting this 10-Year Anniversary Conference.



PROGRAM

10:00–10:20

REGISTRATION

Conference and Event Registration:
<https://forms.gle/kzTEvHwXURMZGDJh7>

10:20–10:30

WELCOME AND CONGRATULATORY REMARKS

Paul Chang (Stanford University)
Woontaek Lim (Keimyung University)

10:30–12:00

RESEARCH ROUNDTABLES

Table 1: Health and Inequality
Table 2: Politics and Ideology
Table 3: Collective Action and Culture
*Detailed information below

12:00–1:00

NETWORKING LUNCH

1:00–2:30

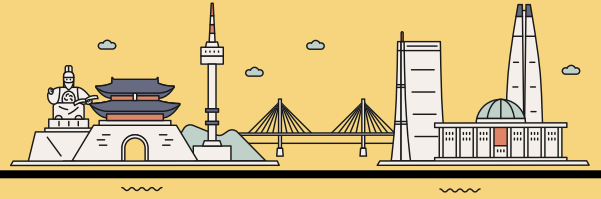
EARLY CAREER PANEL

Jina Lee (University of Illinois at Urbana–Champaign)
Donghyun Kang (University of Chicago)
Hee Eun Kwon (University of Tokyo)
Andrew Kim (University of Tennessee at Knoxville)

2:30–3:00

COFFEE BREAK

**AKSA 10-YEAR
ANNIVERSARY CONFERENCE
AT UNIVERSITY OF ILLINOIS CHICAGO**



3:00–4:30

AKSA PAST PRESIDENTS' PANEL

ChangHwan Kim (University of Kansas)
Hyeyoung Woo (Portland State University)
Hyunjoon Park (University of Pennsylvania)
Chaeyoon Lim (Washington University in St. Louis)
Minjeong Kim (San Diego State University)

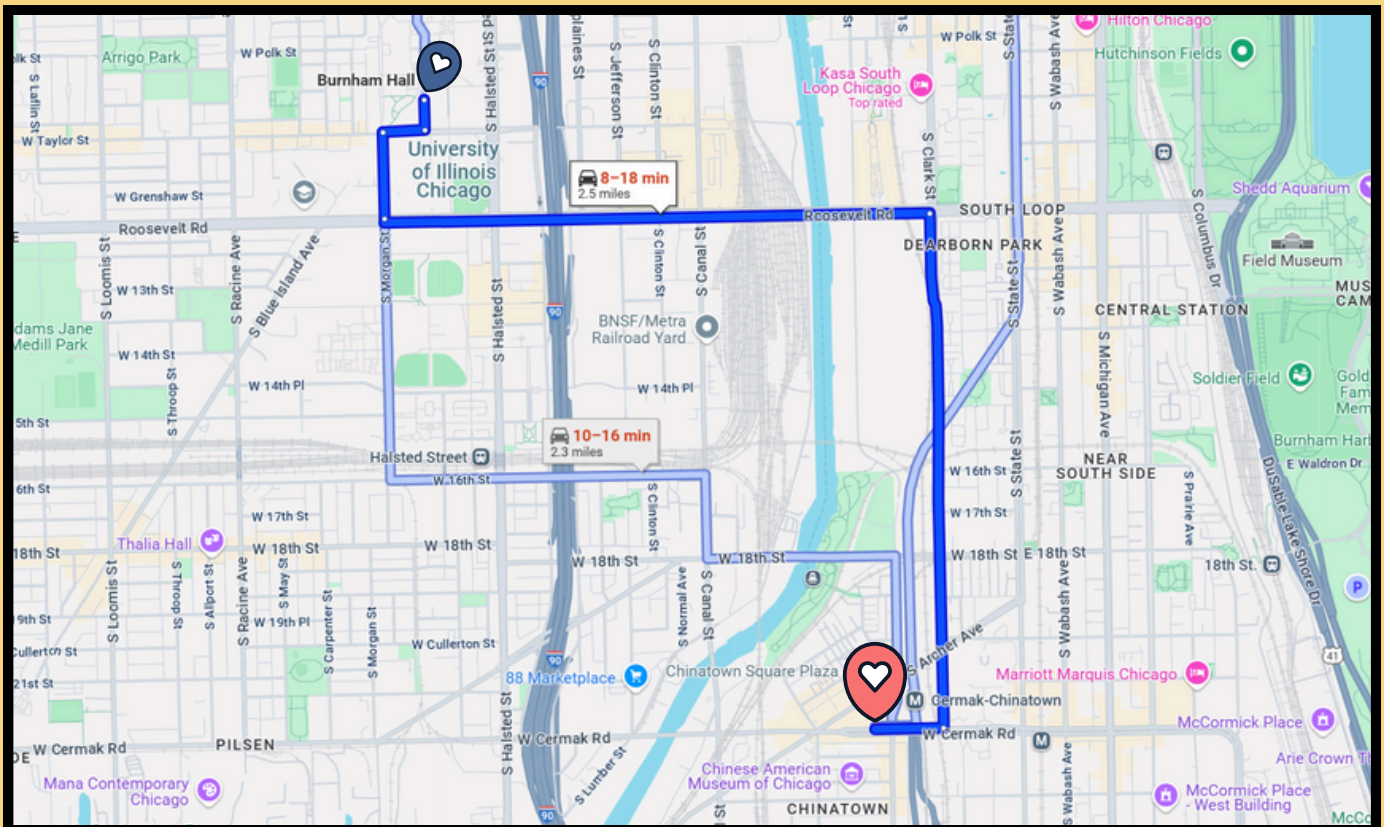
4:30–5:00

BUSINESS MEETING

6:00

RECEPTION DINNER

Ahjoomah's Apron Korean Restaurant
218 W Cermak Rd, Chicago, IL 60616



[HTTPS://MAPS.APP.GOO.GL/SE7NH3Y5Q44XWENB6](https://maps.app.goo.gl/SE7NH3Y5Q44XWENB6)

ROUNDTABLE PRESENTATIONS

HEALTH AND INEQUALITY

MODERATED BY SOO-YEON YOON (SONOMA STATE UNIVERSITY)

Chanki Yoo & David A. Cort (Univ. of Massachusetts Amherst)

Regional HIV Instrumental Stigma and Its Role in Girls' Early Sexual Debut: A Discrete-Time Event History Analysis across 16 Sub-Saharan African Countries

Sunmin Hong & Chan S. Suh (Chung-Ang University)

Group Membership as a Double-Edged Sword?: Affiliation Networks, Residential Areas, and Mental Health in South Korea

Bomi Kim (UC Santa Barbara)

Health Disparities Between Young One- and Multi-Person Households in South Korea: A Longitudinal Analysis of Self-Rated Health Status and Mental Wellbeing, 2005 – 2019

Juwon Park & Gowoon Jung (Korea University)

Body Positivity for Sale: Female Plus-size Models and Influencers Navigating an Authentic Quest for Diversity in South Korea

POLITICS AND IDEOLOGY

MODERATED BY ANGIE Y. CHUNG (SUNY ALBANY)

Joseph Yi (Hanyang University)

Asymmetric Polarization in US and South Korea

Mariusz Kierasiński (University of Warsaw)

Ideological Identity of (north) Korean Sociology

Joonsik Kim (University of Toronto)

Constraining Financialization: Earmarking Foreign Reserves against Riskier Investment

COLLECTIVE ACTION AND CULTURE

MODERATED BY JONATHAN JARVIS (BRIGHAM YOUNG UNIVERSITY)

Jinsun Yang (University of Oregon)

Protest or Festival: LGBTQ+ Sports Activism in East Asia

Yejin Yang & Eun Kyong Shin (Korea University)

Re-thinking Distinction: A Machine Learning-Driven Analysis of Misclassified Leisure Consumers

Jiyoun Yoo (University of Illinois Chicago)

Crossing the Racial Line: Black and Asian Feminist Solidarity Movement